

STATE OF NEBRASKA  
DEPARTMENT OF ROADS  
ADDENDUM NO. 4  
PROJECT NO. STP-275-7(184)  
CONTROL NO. 21574A  
CALL ORDER 200  
US-275, SOUTH OMAHA BRIDGE,  
13<sup>TH</sup> & MISSOURI AVE.  
LETTING DATE: SEPTEMBER 13, 2007

The Right-Of-Way plans are amended to include ROW sheets for Sta. 500± to Sta. 515± as depicted on the attached sheets.

\* \* \* \* \*

Upon execution of the contract, the plans will be revised to reflect these changes.

DEPARTMENT OF ROADS

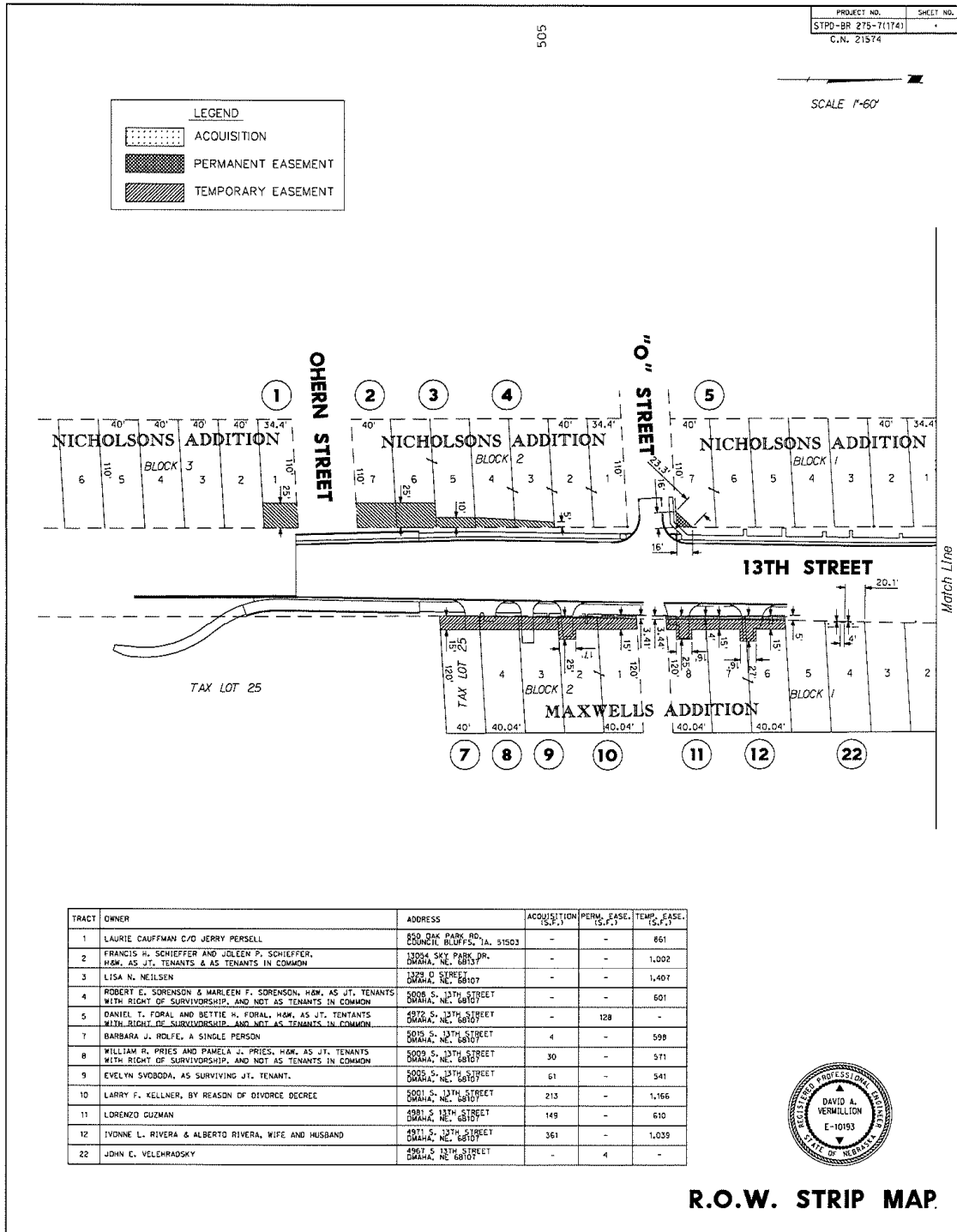
A handwritten signature in black ink, appearing to read "C. Oie", is centered below the department name.

Claude Oie  
Construction Engineer

Issued: September 11, 2007

CO:200AD409

NOTICE: Only the contractors issued bidding proposals receive this addendum and responsibility for notifying any potential subcontractors or suppliers remains with the contractor.



R.O.W. STRIP MAP



