

STATE OF NEBRASKA  
DEPARTMENT OF ROADS  
ADDENDUM NO. 1  
AND  
ELECTRONIC BIDDING SYSTEM  
AMENDMENT NO. 1  
PROJECT NO. STR-80-7(1024)  
CONTROL NO. 42204  
CALL ORDER N27  
I-80, GRAND ISLAND SOUTH VIADUCT  
LETTING DATE: APRIL 18, 2002

The Schedule of Items for Group 10 is amended as follows:

1. The quantity for the bid item "Concrete Protection Barrier" is incorrect. The quantity should read 962.500 LF.
2. The quantity for the bid item "Relocate Concrete Protection Barrier" is incorrect. The quantity should read 962.500 LF.

The EBS generated bid items sheet must show these corrections or the bid will be considered void.

\* \* \* \* \*

Plan sheets 9 and 10 are void and superseded by the attached sheets.

\* \* \* \* \*

Upon execution of the contract, the plans will be revised to reflect these changes.

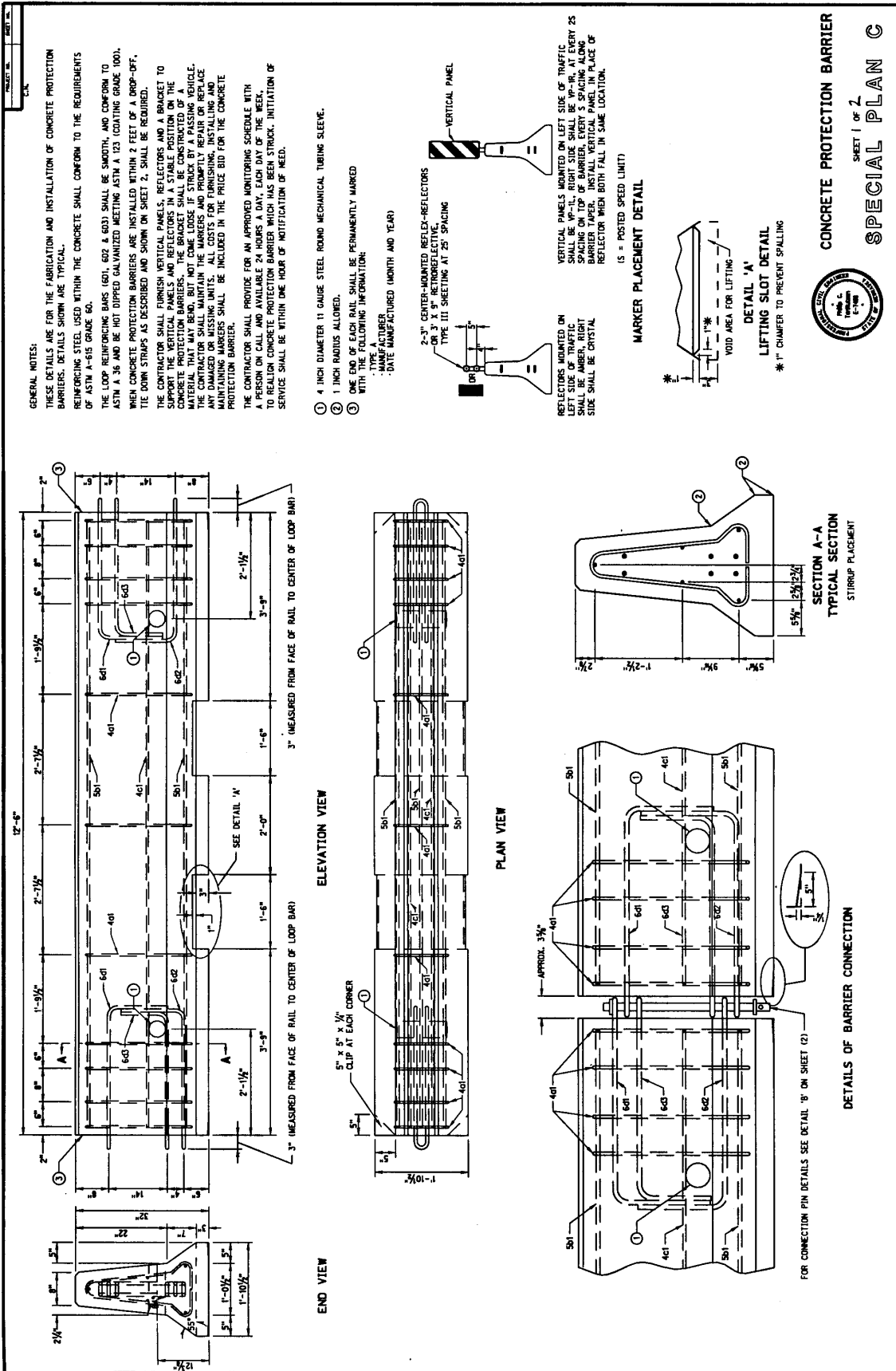
DEPARTMENT OF ROADS

Claude Oie  
Construction Engineer

Issued: April 4, 2002

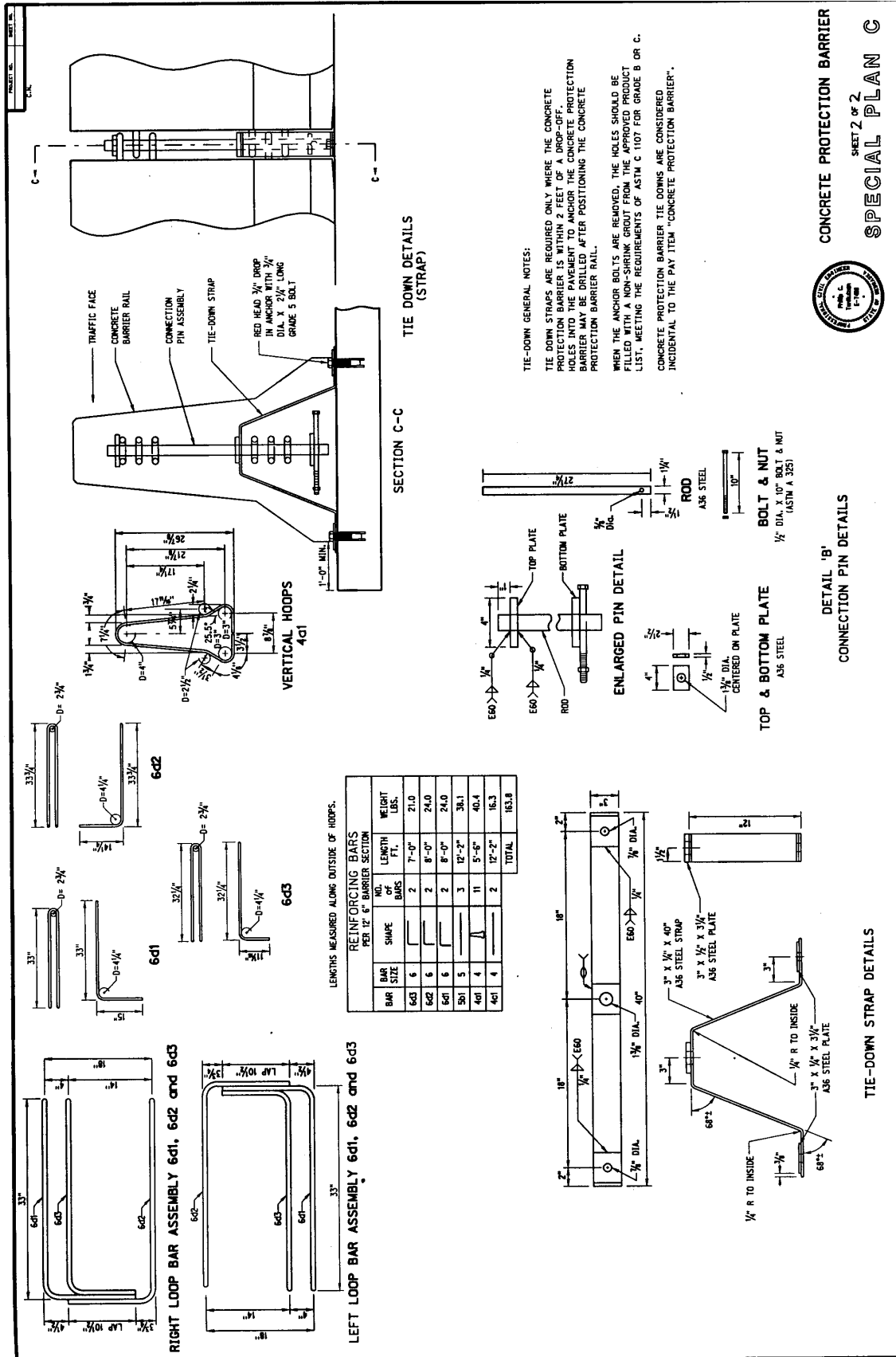
CO:N27AD104

NOTICE: Only the contractors issued bidding proposals receive this addendum and responsibility for notifying any potential subcontractors or suppliers remains with the contractor.



CONCRETE PROTECTION BARRIER  
 SHEET 1 OF 2  
**SPECIAL PLAN C**





CONCRETE PROTECTION BARRIER  
 SHEET 2 OF 2  
**SPECIAL PLAN C**



DETAIL 'B'  
 CONNECTION PIN DETAILS

TOP & BOTTOM PLATE  
 A36 STEEL

BOLT & NUT  
 1/2" DIA. X 10" BOLT & NUT  
 (ASTM A 325)

ENLARGED PIN DETAIL

TIE-DOWN GENERAL NOTES:

TIE DOWN STRAPS ARE REQUIRED ONLY WHERE THE CONCRETE PROTECTION BARRIER IS WITHIN 2 FEET OF A DROP-OFF. HOLES INTO THE PAVEMENT TO ANCHOR THE CONCRETE PROTECTION BARRIER MAY BE DRILLED AFTER POSITIONING THE CONCRETE PROTECTION BARRIER RAIL.

WHEN THE ANCHOR BOLTS ARE REMOVED, THE HOLES SHOULD BE FILLED WITH A NON-SHRINKING GROUT FROM THE APPROVED PRODUCT LIST, MEETING THE REQUIREMENTS OF ASTM C 1107 FOR GRADE B OR C. CONCRETE PROTECTION BARRIER TIE DOWNS ARE CONSIDERED INCIDENTAL TO THE PAY ITEM "CONCRETE PROTECTION BARRIER".